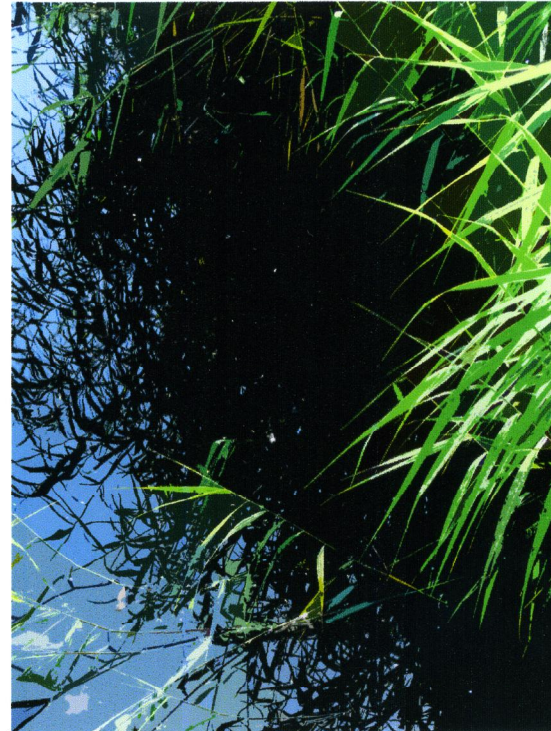


William Rhys Meek was born in Lincolnshire in 1963. He studied at Leeds College of Music, and after a brief spell writing themes for television he began to develop a distinctive and personal style of composing piano music, illustrated by the thematically-linked pieces contained in 'A Fenland Journey'. Whilst harmonically complex the pieces are usually melodic with a strong sense of rhythm. Whereas Satie and Ravel are dominant influences, the composer's admiration for Charles Ives is also evident in his determination to portray landscapes realistically, without overt romanticism. The works on this CD could also be said to be direct descendants of the English pastoral tradition in their vivid depictions of the expansive fenland landscape in which he lived and worked for many years. William draws on an expert knowledge of natural history to create musical portraits of the wildlife and places he has studied in both amateur and professional capacities throughout his life.

'a superb achievement and a fulfilling listening experience, fully deserving of an unequivocal recommendation'
Neil Horner - MusicWeb

'A wonderful find!'
Lloyd Cole - Mequon, WI, USA



William Rhys
MEEK

'A
Fenland
Journey'

music for piano

William Rhys

MEEK

'A Fenland Journey'

Music for piano

1	Winter moth	(1:04)	15	The water machine	(2:23)
2	The wind in the reeds	(0:56)	16	Churchyard moss	(1:33)
3	Fireworks fair	(1:25)	17	Mirror fields	(1:41)
4	Rosa	(1:41)	18	Coltsfoot	(0:50)
5	Waterland	(1:24)	19	Demoiselles	(1:58)
6	The spire	(1:25)	20	The Lapwing's nest	(1:14)
7	The frozen fen	(1:29)	21	Rain on dark water	(1:09)
8	Cloudburst	(1:37)	22	Sea purslane	(1:50)
9	Straw Bear	(1:14)	23	Whirligig	(1:49)
10	Queen Anne's Lace	(2:20)	24	Swans to roost	(1:01)
11	From beneath The Plough	(1:05)	25	The 'copper fields'	(1:23)
12	Page from a Christmas diary	(1:25)	26	Gascoigne's way	(1:44)
13	Skating	(2:21)	27	While you slept	(0:59)
14	The eight-sided lantern	(1:42)			

Copyright William Rhys Meek 2002.

Recorded at No Machine Studios, Wokingham, England, on 20th March 2002

MEEK 'A Fenland Journey'

MEEK 'A Fenland Journey'